



OAKLEIGH
C I V I L

CAPABILITY STATEMENT



Overview

Oakleigh Civil is a dynamic and innovative civil construction company based in South Australia, covering all states and territories.

Specialising in FRP (Form-Reo-Pour) and labour hire, we bring extensive expertise to sectors such as civil infrastructure, defence, renewable energy, mining, water infrastructure, bridges and electrical infrastructure.

Our team of experienced professionals, supported by a modern fleet of vehicles, is dedicated to delivering outstanding service and results.

Recognised for our forward-thinking approach to the industry, we focus on building strong long-lasting relationships with our clients, with a commitment to excellence, safety, and timely project delivery. Our success is driven by our relentless focus on quality, our skilled team, and their unwavering dedication, which forms the foundation of Oakleigh Civil.





Tailem Bend to Keith Pipeline (TBKPL) Valve Upgrades – Commenced April 2024 - June 2024 (Regional SA)

Oakleigh Civil was proud to contribute to the Tailem Bend to Keith Pipeline (TBKPL) Valve Upgrades, working in collaboration with Fleurieu Civil and SA Water to enhance critical water infrastructure in regional South Australia.

Our scope of works included the construction of three new valve chamber pits, strategically located in Tintinara, Culburra, and Coonalpyn. Each chamber consists of 3.4m high reinforced concrete walls, with a total wall length of 25m per chamber, utilising a total of 170m³ of concrete across the project. Additionally, we constructed new plinths for the valve installations.

This complex project required precision and a high level of expertise, and Oakleigh Civil were committed to delivering these vital upgrades efficiently and to the highest standards. These works play an essential role in improving the reliability and functionality of the region's water supply network.





Clark Creek Wind Farm -January 2024 (QLD)

Stage One of the Clarke Creek Wind Farm, located 150km northwest of Rockhampton and 150km south of Mackay, is a 450MW renewable energy project featuring 100 Goldwind 4.5MW wind turbines. Once operational, it will generate enough electricity to power approximately 330,000 Queensland homes.

We are proud to have contributed to this significant project by handling the base reinforcement of these massive structures, with approximately 80 tonnes of REO per turbine.

Our 15-person crew on the ground were responsible for all reinforcement work, including steel fixing, conduit install, bolt assembly, and pre-cast installation, ensuring the structural integrity and precision required for these monumental installations.





Port Wakefield 2 Port Augusta Highway Duplication June 2022 – April 2024 (Regional SA)

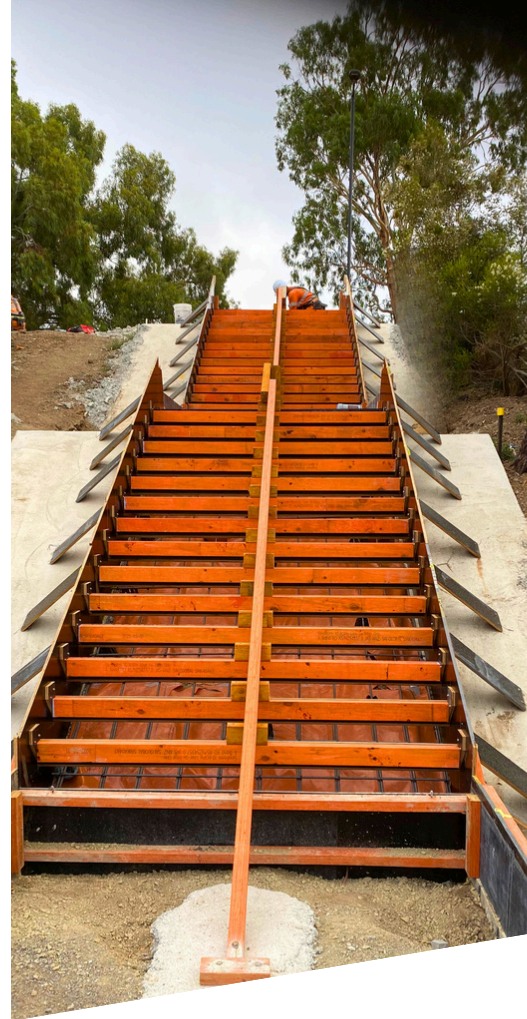
Oakleigh Civil, in collaboration with Catcon and CPB, played a key role in delivering the FRP in-situ concrete works for this project.

Our scope of work encompassed a diverse range of critical structural elements, including the installation of slab-on-ground, wing walls, head walls, apron slabs, and the placement of pre-cast culverts.

From the initial site preparation to the final finishing touches, our experienced team has applied industry-leading expertise and precision to every stage of the project.

With a strong commitment to quality, safety, and efficiency, we have worked meticulously to ensure all concrete works were executed to the highest standards while adhering to project timelines and specifications.





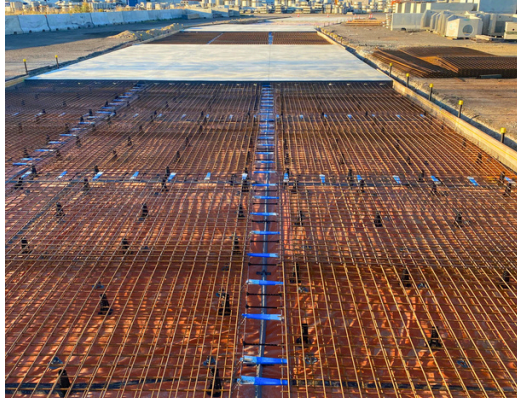
River Torrens Breakout Creek Stage 3 Project – Completed August 2023 (SA)

The River Torrens Breakout Creek Stage 3 Project involved a complete redevelopment along the Torrens River Outlet at West Beach. This \$18.7 million initiative was a collaboration between Green Adelaide, the City of Charles Sturt, the City of West Torrens, and SA Water.

Oakleigh Civil, in partnership with Bardavcol, was entrusted with the delivery of all in-situ concrete structures for the project. Our scope included the construction of 400m of retaining walls of varying heights, 60m of seat walls, 7 completely new staircases, and 4 staircases with integrated bike ramps, as well as weirs.

A key feature of this project was the high level of detail involved in the exposed concrete work. The team used a specific mix and finish on the walls to ensure both durability and aesthetic appeal, delivering a highly refined result that met the project's demanding standards.





Slab On Ground Project Completed March 2022 (SA)

Oakleigh Civil was engaged to construct two new heavy-duty driveways for Civilmart, specifically designed to accommodate high traffic volumes and heavy vehicle loads.

The project involved the construction of one expansive driveway spanning over 1,000m² and another measuring over 800m², both engineered to withstand the daily demands of Civilmart's operations.

Our team meticulously managed every aspect of the project, from earthworks and subgrade preparation to reinforcement and concrete placement, ensuring a robust and long-lasting result.

With a strong focus on quality, precision, and efficiency, we delivered driveways that not only meet but exceed industry standards for durability and functionality.





Custom Mould Fabrication for Precast Structures (SA)

Oakleigh Civil is a trusted partner of Humes, frequently engaged to construct custom, one-off moulds for their precast concrete structures.

With our extensive expertise in precision mould fabrication, we ensure that each mould is meticulously designed and built to meet the specific project requirements, delivering high-quality, accurate, and durable results.

Our team's ability to adapt to unique design challenges and deliver tailored, high-performance solutions has made us a go-to provider for Humes' specialised precast needs.

This ongoing collaboration underscores our commitment to excellence, innovation, and reliability, reinforcing Oakleigh Civil's reputation as a leader in custom concrete construction within the industry.





Port Wakefield Town Park – November 2022 (Regional SA)

Oakleigh Civil was contracted to deliver over 500m² of decorative concrete works at the newly developed Port Wakefield Town Park, playing a key role in enhancing the space for the local community. Working in collaboration with CPB and Ecodynamics, our team expertly managed the design, preparation, and installation of the exposed aggregate footpath, ensuring a visually striking yet highly durable finish.

This project required a meticulous approach to craftsmanship, balancing structural integrity with aesthetic appeal. By utilising high-quality materials and precise construction techniques, we successfully delivered a long-lasting and low-maintenance surface that complements the park's overall design.

Completed to the highest standards of quality and safety, this project contributes to the revitalisation of Port Wakefield Town Park, providing a welcoming and functional public space that will be enjoyed by the community for years to come.





Ready to build your next project? Lets talk!

Oakleigh Civil has a diverse portfolio of projects and extensive experience across a variety of sectors. If you would like to learn more about our specific projects, structures, or capabilities, we would be happy to provide additional details and insights. We take great pride in our work and are always eager to share our expertise and discuss how we can assist with your next project.

Yours sincerely,

Trevor Kelly

0415 822 205
Managing Director



**“OUR JOURNEY SO
FAR IS JUST THE
BEGINNING”**



OAKLEIGH
C I V I L